

2 BASIN GAS PASTA-COOKER 40+40 LT - WITH SET OF 6 BASKET GN1/3

Project:
Rev.:
Zone:
Location:



CODE
CR1018279

MODEL
Q90CPM/G800

SERIE
QUEEN 9

GENERAL FEATURES

- AISI 304 stainless-steel bases and worktops, Scotch-Brite finish
- Depth of 900 mm for high power and performance
- Catalogue offers more than 350 standard models
- Worktop, base cabinet, base cabinet with doors and oven versions
- 20/10 worktop thickness
- Twin-piece knobs prevent infiltration of dirt and have an IPX5 water ingress protection rating
- Gas ranges having burners with various configurations and power ratings: 3.5 kW - 5.7 kW, 7 kW and 10 kW. Double-ring burners for 7 and 10 kW models
- Wide range of accessories

The knobs offer optimum grip and help the chef to have the setting controls right under his eyes. Special attention has also been paid to the knob bezel that has been expertly designed to avoid penetration of liquids and/or dirt. Thanks to the IPX5 water jet ingress protection rating, awarded after passing specific tests, knobs and knob bezels can be washed at the end of the working day without affecting performance or safety.



TECHNICAL DETAILS

GAS

2 BASIN GAS PASTA-COOKER 40+40 LT - WITH SET OF 6
BASKET GN1/3

- Large capacity (42 litres) alloy AISI 316 stainless steel cooking tank with excellent corrosion resistance even at high temperatures. They are moulded with internal rounded corners for maximum hygiene and cleaning, and are equipped with wide foam expansion areas and a drain device for residue starch;
- Safety thermostat in tub to avoid dry functioning;
- Stable flame burners with pilot burner piezoelectric ignition;
- Safety valve with thermocouple and progressive adjustment of the supplied power independent for each tub.

2 BASIN GAS PASTA-COOKER 40+40 LT - WITH SET OF 6 BASKET GN1/3

CODE
CR1018279

MODEL
Q90CPM/G800

SERIE
QUEEN 9

TECHNICAL INFORMATION

SPECIFICATIONS	DATA
CODE	CR1018279
DEFINITION	Q90CPM/G800 CUOCIP. FULL GAS 2V.40LT M80
MODEL	Q90CPM/G800
COMMERCIAL LINE	QUEEN
SUPPLY	GAS
WIDTH	800 MM
DEPTH	900 MM
HEIGHT	870 MM
NET WEIGHT	134,800
VOLUME	0,626 M3
PACKAGING LENGTH	860,000
PACKAGING WIDTH	1020,000
PACKAGING HEIGHT	1150,000
PACKAGING VOLUME	1,010
PACKAGING GROSS WEIGHT	150,000
GAS POWER (G30/30 MBAR)	28,00 KW
GAS POWER (G25/25 MBAR)	26,00 KW
CERTIFIED MODEL	Q90CPM/G800
CERTIFICATION NUMBER	CE-0085BT0057
CERTIFICATION BODY	0085

2 BASIN GAS PASTA-COOKER 40+40 LT - WITH SET OF 6 BASKET GN1/3

CODE	MODEL	SERIE
CR1018279	Q90CPM/G800	QUEEN 9

ACCESSORIESES

CODE	MODEL	DESCRIPTION
CR0999079	CCP12	CCP12 BASKET CP GN1/2 IMP. LATERAL
CR0999089	CCP13L	CCP13L BASKET CP GN1/3 IMP. LATERAL
CR0999099	CCP13F	CCP13F BASKET CP GN1/3 IMP. FRONTAL
CR0999109	CCP16D	CCP16D BASKET CP GN1/6 IMP. RIGHT
CR0999119	CCP16S	CCP16S BASKET CP GN1/6 IMP. LEFT
CR0999129	CCP19	CCP19 BASKET CP GN1/9 IMP. FRONTAL
CR0999149	GFCP40	BOTTOM GRID FOR TANK 40Lt.
CR0999169	CVCP40	CVCP40 LIDS FOR CP TANK 40LT
CR0999179	9KIT - A	KIT 2 GN1/3 STAINLESS STEEL BASKETS FRONT HANDLE + 1 GN1/3 BASKET
CR0999189	9KIT-B	9KIT - B KIT BASKET PASTA-COOKERS
CR0999199	9KIT-C	9KIT - C KIT BASKET PASTA-COOKERS
CR0999209	9KIT - D	KIT 3 STAINLESS STEEL BASKETS GN1/3 SIDE HANDLES
CR0999219	9KIT-E	9KIT - E KIT BASKET PASTA-COOKERS
CR1018839	QP12	Base door L 400
CR1018849	QKC11	KIT DRAWERS GN1/1 H150
CR1015349	QRG11	SET OF TRY SLIDES GN 1/1
CR0592770	ZA40	FRONT PLINTH
CR0982789	ZL90	SIDE PLINTH SERIE 900
MA97432000	NXR	SET OF WHEELS NXR
MA97433000	NXRI	SET OF WHEELS INOX NXRI
CR1015369	QCH20	DIRECTABLE WATER FLUE
CR0592869	CR0592869	4 PIEDI X INSTALL.SU ZOCCOLO DI CEMENTO
CR1015339	QPT	N. 4 PIEDINI IN ACCIAIO INOX PER INSTALLAZIONE SU PIANI
CR0592879	CR0592879	KIT ANTI RIBALTAMENTO 2 PIEDI X N900
CR0592399	NXTVT1	KIT PANNELLI X BASE TECN.1 FRONTE NXTVT1
CR0592409	NXTVT2	KIT PANNELLI X BASE TECN.2 FRONTI NXTVT2
CR1018879	Q90FTDX	FIANCO TERMINALE DESTRO QUEEN
CR1018889	Q90FTSX	FIANCO TERMINALE SINISTRO QUEEN
CR0980009	CANT	TUBULAR HANDRAIL FRONTALE (AL METRO LINEARE)
CR0980019	9CLAT	TUBULAR HANDRAIL LATERALE SERIE 900
BN418031900211	9PRD	PIANO LATERALE RIBALTABILE DESTRO
BN418031900460	9PFD	PIANO LATERALE FISSO DESTRO
BN418031900221	9PRS	PIANO LATERALE RIBALTABILE SINISTRO
BN418031900470	9PFS	PIANO LATERALE FISSO SINISTRO
BN418031900121	9KR	KIT STATIC WARMER

**2 BASIN GAS PASTA-COOKER 40+40 LT -
WITH SET OF 6 BASKET GN1/3**

CODE
CR1018279

MODEL
Q90CPM/G800

SERIE
QUEEN 9

PRODUCT'S RANGE PLUS



Manual water filling



Safety pressure switch prevents heating if there is no water in the basin.



Internal compartment not accessible for total safety in use, closed with a door for aesthetic alignment.



Thanks to the IPX5 water jet ingress protection rating, awarded after passing specific tests, knobs and knob bezels can be washed at the end of the working day without affecting performance or safety.



Safety pressure switch to prevent the activation of heating without water in tank.



The front bar is a comfortable place for the chef to lean on; it means you will remain at a safe distance from the worktop and therefore protects from accidentally knocking against both items lying on the worktop and the knobs.

2 BASIN GAS PASTA-COOKER 40+40 LT - WITH SET OF 6 BASKET GN1/3

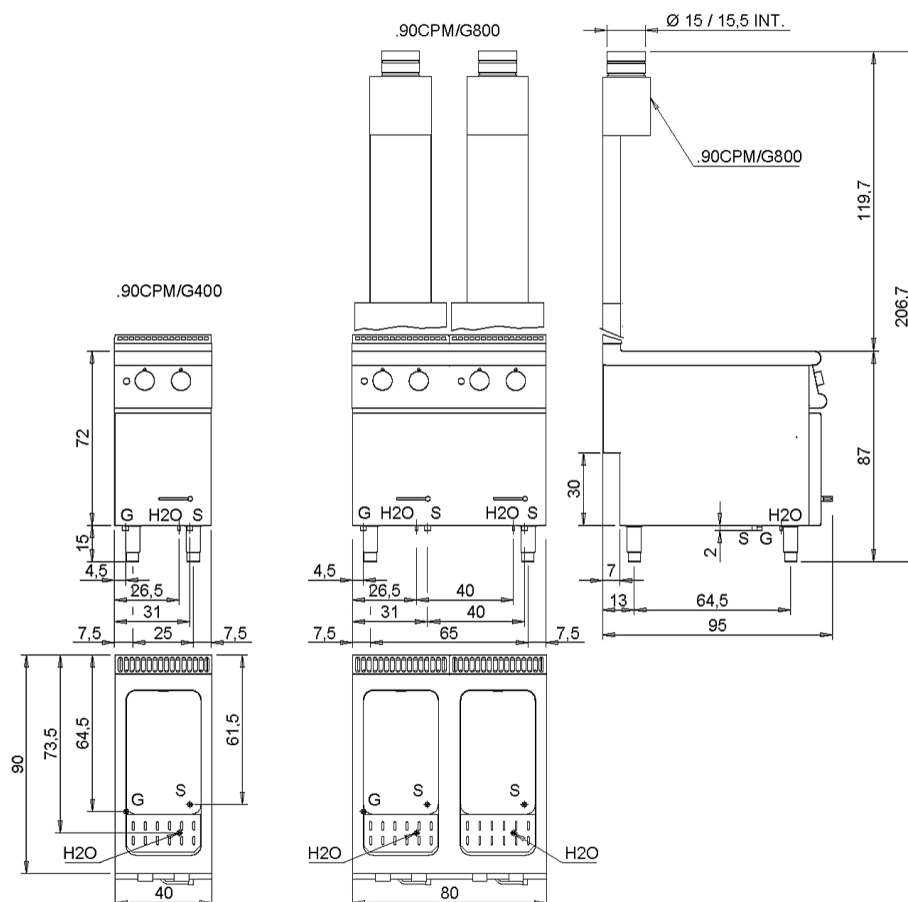
CODE
CR1018279

MODEL
Q90CPM/G800

SERIE
QUEEN 9

SCHEMA DI INSTALLAZIONE - INSTALLATION DIAGRAM - INSTALLATIONSPLAN - SCHÉMA D'INSTALLATION - ESQUEMA DE INSTALACION -INSTALLATIESCHEMA - IINSTALLATIONSRTNINGAR

MISURE IN cm - DIMENSIONS IN cm - ABMESSUNGEN IN cm- MESURES EN cm
MEDIDAS EN cm - MATEN IN cm - DIMENSIONES EN cm



Legenda - Legende - Key - Légende - Leyenda - Legenda

E	Pressacavo entrata linea elettrica - Stopfbuchse - Electric cable stress relief - Presse étoupe de câble él - Pisacable - Elektrische kabelwartel - Entrada cabo eléctrico	G	Arrivo gas - Gasanschluss - Gas connection - Arrivée gaz - Union de gas - Gasaansluiting - Ligaçao gas EN 10226-1 R 1/2; EN ISO 228-1 G 1/2 (DK)
S	Attacco scarico acqua - Wasserablauf - Water outlet - Vidange de l'eau - Desaguadero - Wateraftapaansluiting - Junção descarga água EN 10226-1 R1	H2O	Arrivo acqua - Wasseranschluss - Water inlet - Arrivée eau - Union de agua - Wateraansluiting - Junção alimentação água
S1	Scarico vasca - Wannenabflussrohr - Pan outlet - Vidange du bac - Descarga cuba - Water toevoer - Descarga da cuba	A1	Calda - Heiss - Warm - Chaude - Caliente - Warm - Morno
S2	Valvola di depressione - Anti-depression valve - Unterdruck ventil - Soupape de dépression - Válvula de depresión - Onderdrukklep - Válvula de depressão	A2	Fredda - Kalt - Cold - Froid - Fria - Koude - Frio Ø= 1 cm
S3	Scarico acqua intercapedine - Wasserablauf Zwischenraum - Jacket water drain Evacuation eau double envelope - Descarga de agua intersticios - Afvoer water tussenuimte - Descarga de água na marmitta com Sistema de aquecimento indirecto	L	Rubinetto di livello - Level tap - Wasserhahn - Robinet de niveau - Grifo de nivel - Niveaakraan - Torneira de nível